



KINSHIP
NAVIGATION
A Program of NCHS

Every caregiver has their struggles...

and you are not alone in them.

As a kinship caregiver, you play an essential role in a child's life.

Going above and beyond expectations to help provide the best care possible, many caregivers face hurdles when adjusting to their "new normal."

At NCHS, we know that caregiving is a challenging experience, which is why we are here to help support you when you need it most.

Families come in all shapes and sizes.

Regardless of how your family was formed, we're here to connect you to the resources and support you need to succeed.

**Kinship Care is more prominent
than you might think:**

2.7 million

Currently, 2.7 million children are being cared for by someone other than their biological parent(s).

1 in 11

By the time they reach age 18, 1 in 11 children have experienced kinship care.

10%

of all children live with their grandparents.

Why is Kinship Care Important?

Studies show that kinship care:



Minimizes
trauma



Improves
well-being



Increases
permanency



Improves
behavioral and
mental health
outcomes



Promotes
sibling ties



Preserves
identity of children
and youth

Children in kinship care tend to be:

- Better able to adjust to their new environment
- Less likely to experience school disruptions
- Less likely to experience behavioral challenges and psychiatric disorders

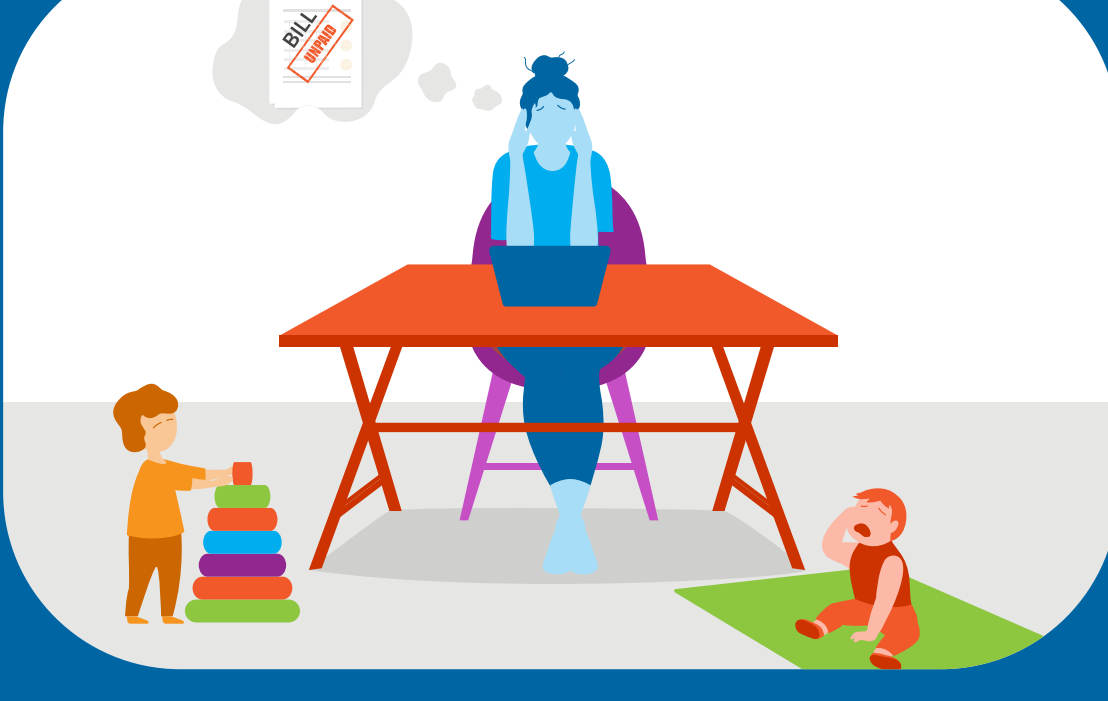


Kinship Caregivers Need Support:



These caregivers need — access to **educational resources, emotional support, financial support, legal support, and medical care groups** to provide an excellent level of care.

More than **20% of households** with children lack confidence in their ability to support their families financially.



Nearly **25% of caregivers** say they feel hopeless or overwhelmed from time to time.

The children being cared for need — **economic stability, access to education, resources to sustain a healthy life, and family and community support to help adjust to their new surroundings.**



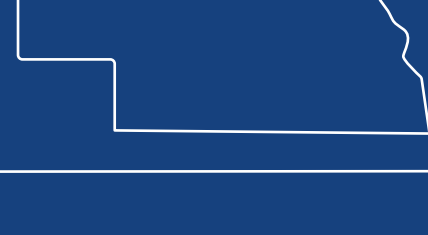
Everyone needs help sometimes.

NCHS has been there for families like yours since 1893.

Visit our website at nchs.org or call 888.315.7347 for more information.



KIN-TECH™ is an evidence-based kinship navigation practice model which is transforming communities and child welfare. KIN-TECH™ is a registered trademark of the Children's Home Network used here by permission.



Sources:

assets.aecf.org/m/resourcedoc/aecf-2021kidscountdatabook-2021.pdf

www.aecf.org/blog/what-is-kinship-care

www.americanbar.org/groups/public_interest/child_law/resources/child_law_practiceonline/child_law_practice/vol-36/july-aug-2017/kinship-care-is-better-for-children-and-families/

<https://www.fatherly.com/love-money/living-near-grandma-grandpa-pros-cons/#:~:text=Grandparents%20wh...live%20there%20too%20or%20not.>